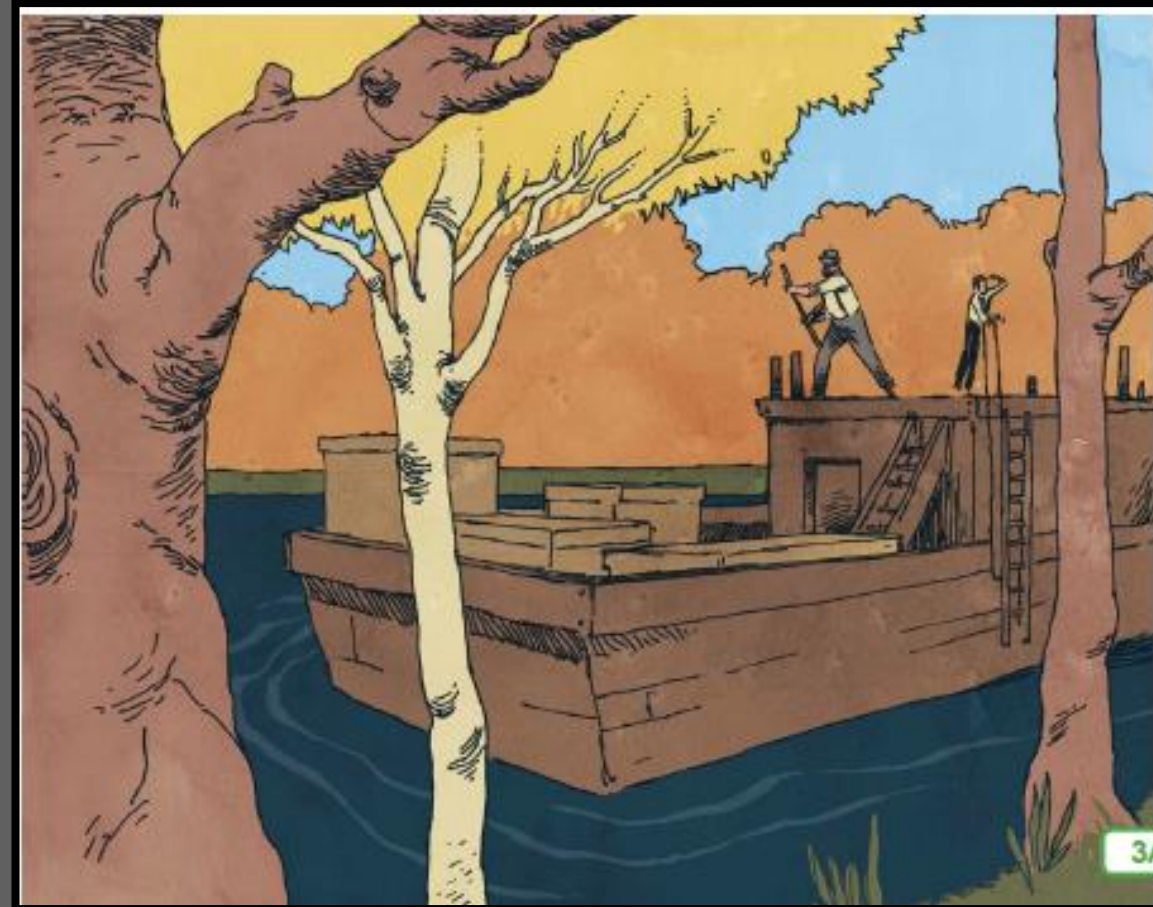


Pa and I have been making our way along the Erie Canal from Albany to Buffalo today at a good, steady pace. We're traveling on our brand new flatboat. A flatboat is a big, flat

boat on which we carry goods and products along the Erie Canal. Well, to be honest, the flatboat isn't *quite* ours yet, but almost. Last night Pa told me, "When we reach Buffalo, we will have made the last payment on this flatboat. Then it's all ours at last." You see, we made a deal with Mr. Franklin that every time we take the flatboat up and back for him, part of our pay goes toward buying the flatboat for ourselves. It has taken three years of hard work. We're really excited to actually own the flatboat, because we will be able to keep all the money we earn on each trip we make.

The Journey of a Twelve-Year-Old on the Erie Canal

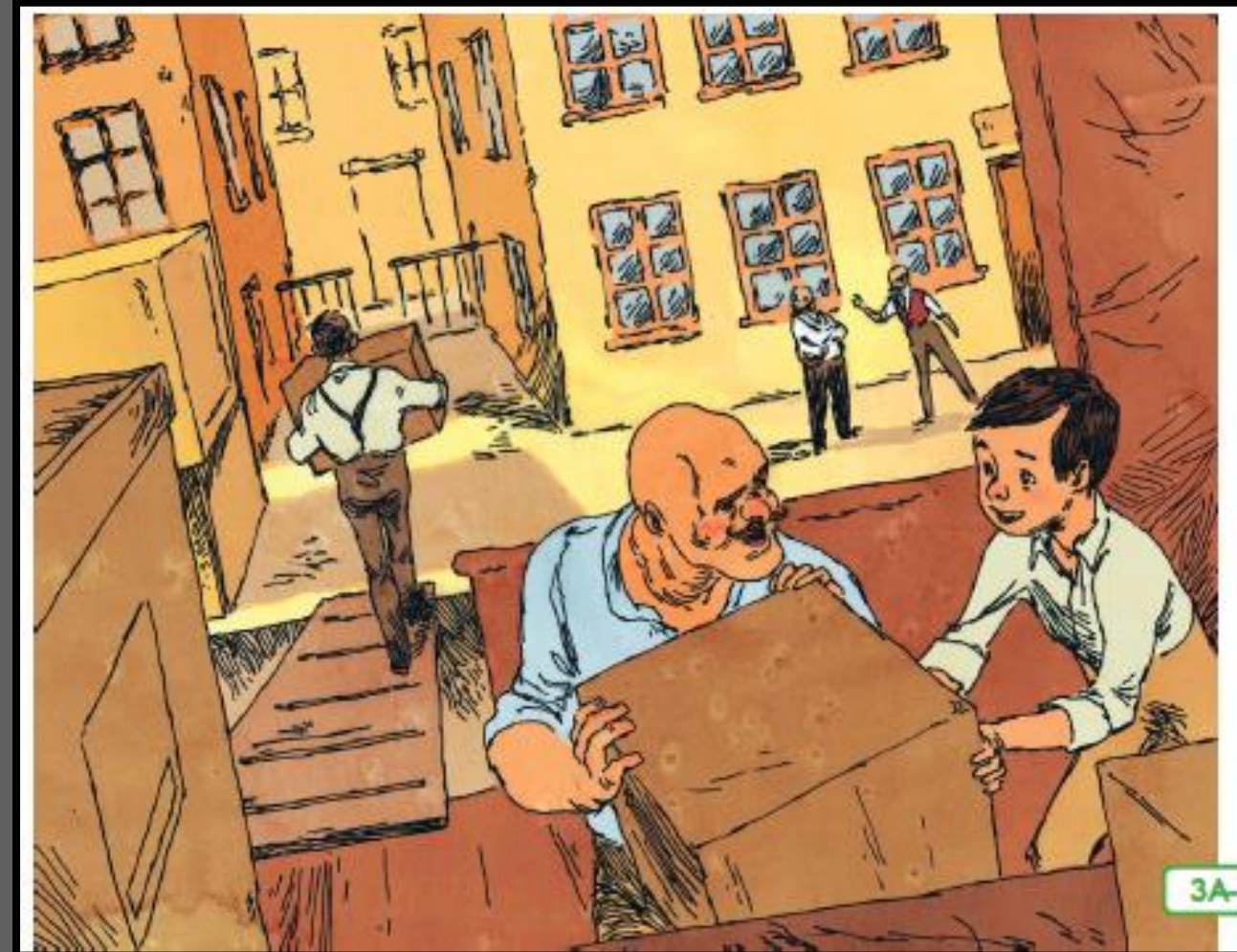


Ma and sis are waiting for us in Buffalo. I can't wait to see them again! I love being on the flatboat with Pa, but all the work we do makes us tired.

The thing is, I don't know exactly how many more days it will take to get to Buffalo. It depends on how much of the **freight** we sell along the way. The more we sell, the less the flatboat will weigh, and the faster we will be able to travel. Sometimes, a store owner or manufacturer at some town or village asks us to add his products onto our flatboat. Every time we take more goods on board, it slows down our travel.

3A & 3B I can describe how the colonial times are connected to westward expansion.

Yo puedo describir cómo los tiempos de la colonia están conectados con la expansión del oeste.



3A & 3B I can describe how the colonial times are connected to westward expansion.

Yo puedo describir cómo los tiempos de la colonia están conectados con la expansión del oeste.

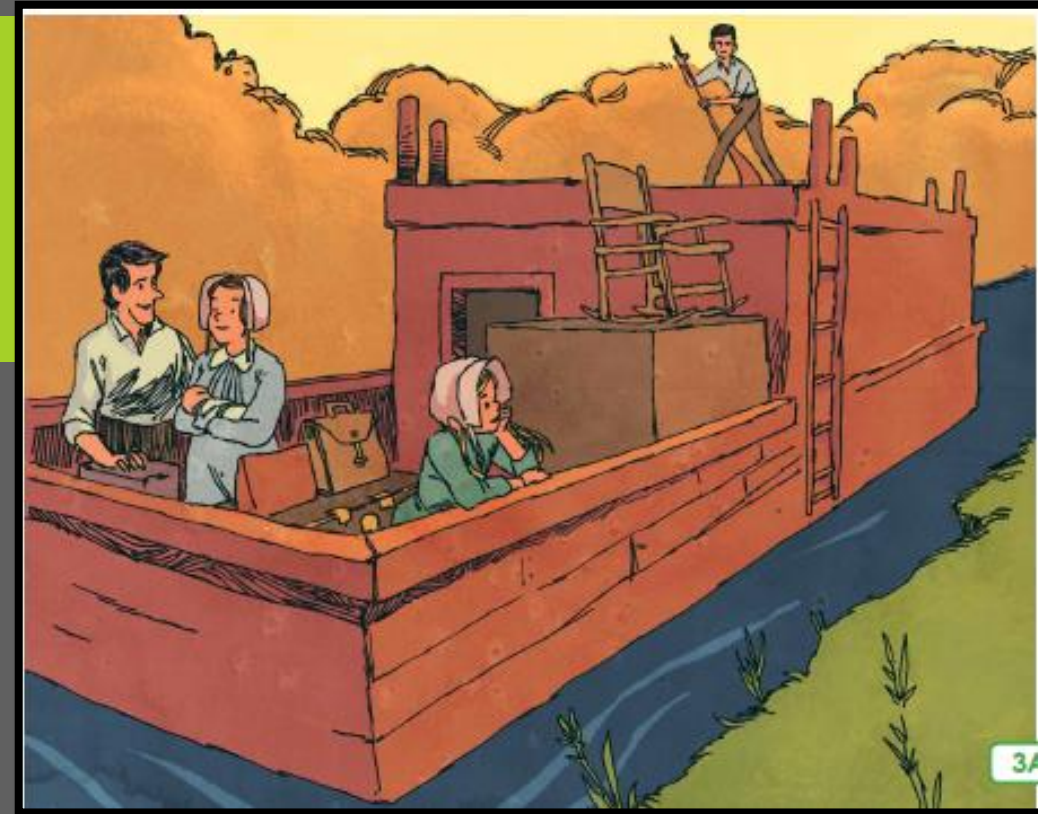
Tow - Remolcar



My favorite part of helping Pa is that I get to care for the mules. We have such a big flatboat that it takes three mules to **tow** it. They walk on the towpath next to the canal and pull the ropes that are connected to the flatboat. Some smaller flatboats along the canal are one-mule flatboats, or sometimes horses or oxen do the pulling.



Before folks built the **Erie Canal**, it took longer to move things from the East westward. Because a flatboat floats on water, it's much easier to **transport** heavy freight like coal and wood. Plus, you don't need to worry about a wagon wheel breaking on the trail. Not only that, it costs less money to travel on the canals than over land. Pa says that for every dollar it used to cost to travel on land, it now costs only about a dime to travel on the canal's water. Because the canal made it so much easier and faster to head westward, many people moved west to farm or build new cities. See, Pa explained to me that moving out to the West seemed like a good idea once the people there knew they could sell whatever they grew or made to folks back in the East, as well as to people in the West. It's amazing how much the Erie Canal changed things here. It's hard to imagine a time without it!



Transport - Transportar

3A & 3B I can describe how the colonial times are connected to westward expansion.

Yo puedo describir cómo los tiempos de la colonia están conectados con la expansión del oeste.

Lucky for us, today was a really great day for traveling up the canal. In nice weather, we can travel a lot of miles. When it's stormy, though, like it was a couple of weeks ago, it is not so pleasant. It was snowing so much, we nearly had to stop right where we were. The snow was coming down so heavily you couldn't see your hand if you held it out right in front of you. Fortunately, our mules are always able to stay on the path, even in a snowstorm, so I just let them lead the way, and they bring us safely to the next town.

3A & 3B I can describe how the colonial times are connected to westward expansion.
Yo puedo describir cómo los tiempos de la colonia están conectados con la expansión del oeste.



Snowstorm – Tormenta de Nieve

3A & 3B I can describe how the colonial times are connected to westward expansion.
Yo puedo describir cómo los tiempos de la colonia están conectados con la expansión del oeste.

Anyway, I think that's about it for now. I'm pretty tired after all the work today. I think it is time for me to get some sleep so I'm ready to work on the flatboat tomorrow.



3A & 3B I can describe how the colonial times are connected to westward expansion.
Yo puedo describir cómo los tiempos de la colonia están conectados con la expansión del oeste.

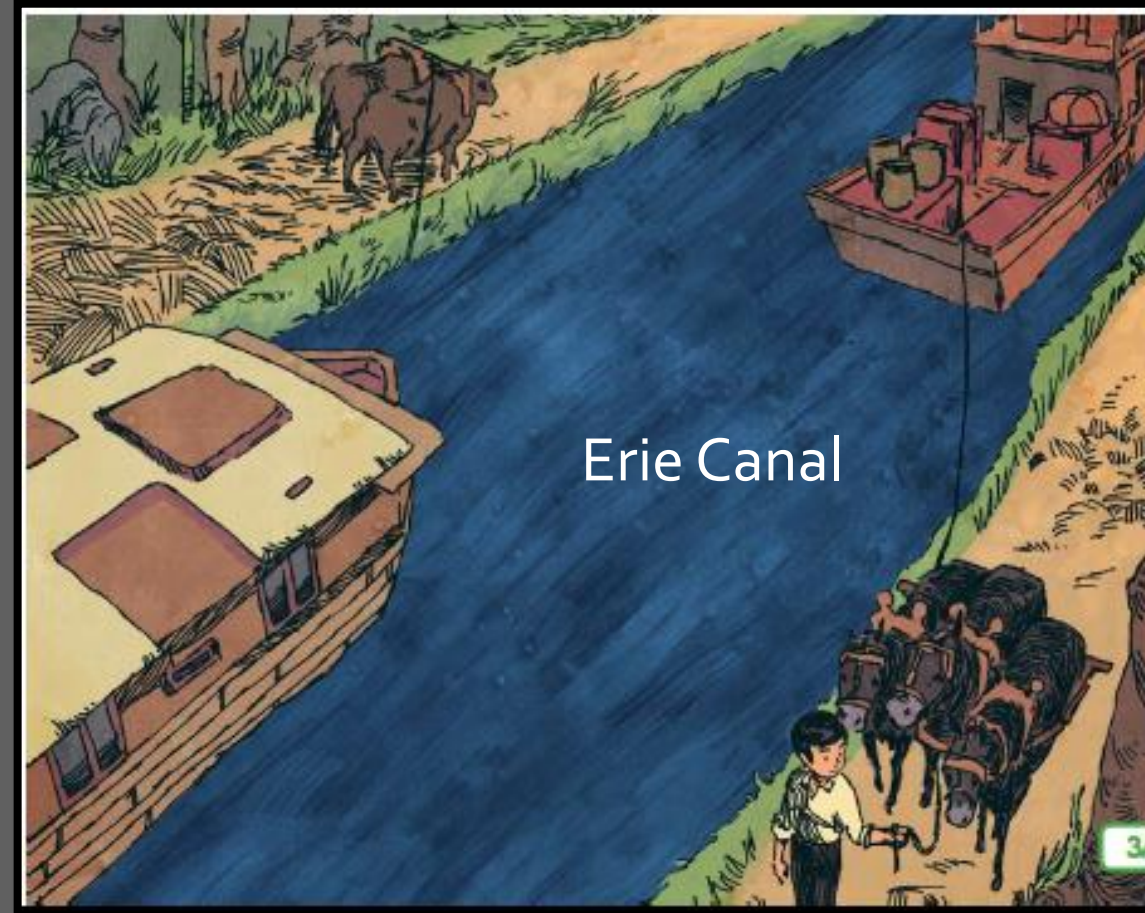
Comprehension Questions

1. *Evaluative* What was the main topic of the read-aloud?
2. *Literal* Who wrote the journal entry that you just heard?
3. *Inferential* What is the setting for this story?
4. *Inferential* Why were canals built in the United States in the 1800s?
5. *Literal* The boy and his father were not traveling on the Erie Canal because they wanted to move to the West like the family in the first read-aloud. They traveled back and forth because of their work. What kind of work did they do?

3A & 3B I can describe how the colonial times are connected to westward expansion.
Yo puedo describir cómo los tiempos de la colonia están conectados con la expansión del oeste.

Comprehension Questions

6. *Literal* How were mules and other animals important on the Erie Canal?
7. *Inferential* What problems did boats on the canal face?
8. *Inferential* How did canals like the Erie Canal increase westward expansion?
9. *Evaluative Think Pair Share:* Would you like to have worked on a flatboat on the Erie Canal? Why or why not?
10. After hearing today's read-aloud and questions and answers, do you have any remaining questions?



WORD WORK: TRANSPORT - TRANSPORTAR

1. In the read-aloud you heard, "Because a flatboat floats on water, it's much easier to *transport* heavy goods like coal and wood."

2. Say the word *transport* with me.

3. *Transport* means to carry or move from one place to another.

4. The farmer will use his truck to *transport* his produce to the farmers' market.

5. What do you and your family use to *transport* things? What do you *transport*? Try to use the word *transport* when you tell about it. [Ask two or three students. If necessary, guide and/ or rephrase students' responses: "My family uses a to *transport* ."]

6. *What's the word we've been talking*

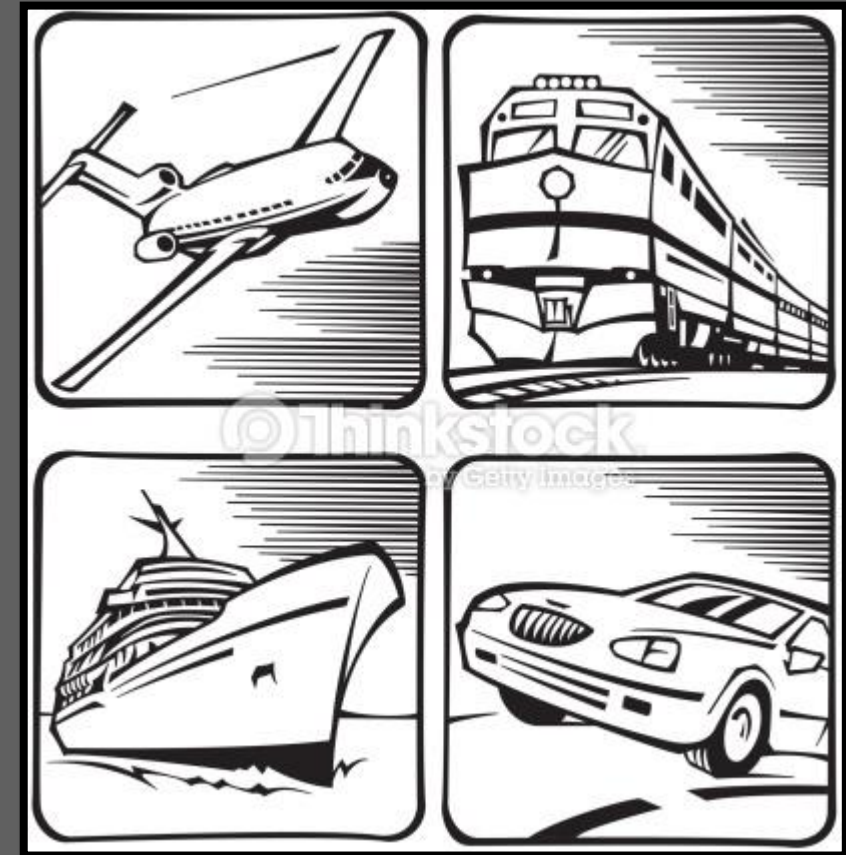


WORD WORK: TRANSPORT

TRANSPORTAR

3A & 3B I can describe how the colonial times are connected to westward expansion.
Yo puedo describir cómo los tiempos de la colonia están conectados con la expansión del oeste.

1. How would you **transport** children to school?
2. How would you **transport** people to another continent?
3. How would you **transport** horses to a farm?
4. How would you **transport** a dog to a veterinarian's office?
5. How would you **transport** games to a friend's house?



3A & 3B I can describe how the colonial times are connected to westward expansion.
Yo puedo describir cómo los tiempos de la colonia están conectados con la expansión del oeste.

Mini-lesson:

- **Trans**port is a base word (port) with a prefix (trans). *Trans* means to across; on or to the other side.
- There are other words with the prefix *trans*. In cycles of nature unit we heard and used the word **transform**. **Transform** means to change how something looks. For example, the ugly duckling **transformed** into a swan. The tadpole **transformed** into a frog.
- Let's see if we can match *trans* words to their meaning.

3A & 3B I can describe how the colonial times are connected to westward expansion.
Yo puedo describir cómo los tiempos de la colonia están conectados con la expansión del oeste.

Match *trans* words to their meaning.

Translate	Transcontinental	Transplant	Transnational	Transatlantic
a. Remove from one place and put somewhere else	b. Across the Atlantic ocean	c. Across a country or nation	d. Change from one language to another	e. Across a continent